

2 FOR £15 BREKKIE

7.30am - 11am Mon - Sat
8am - 11am Sun

Choose from: Any of our
delicious breakfast dishes.

MORNING FAVOURITES

Full English breakfast	12.95
sausage, bacon, black pudding, hash brown, baked beans, mushroom, cherry vine tomatoes & toast <i>Choose how you would like your eggs; poached, scrambled or fried</i>	
Full Veggie breakfast (V)	12.95
baked beans, mushroom, tomato, veggie sausage, hash browns, avocado & toast <i>Choose how you would like your eggs: poached, scrambled or fried</i>	
Smoked salmon	11.95
with scrambled eggs on malted bloomer	
Smashed avo (V)	9.95
with cherry vine tomatoes, poached eggs on malted bloomer	
Bacon or sausage sandwich	6.95
with brown sauce or ketchup <i>Add two hash browns +2.50</i>	
Three egg omelette	7.95
<i>Add two fillings; cheese, ham, mushroom or tomato</i>	
Eggs on toasted malted bloomer (V)	6.95
<i>Choose how you would like your eggs: poached, scrambled or fried</i>	

SIGNATURE SELECTION

Double sausage, cheese & egg muffin	10.50
with hash browns	
Shakshuka (V)	7.95
baked eggs in a spicy tomato sauce, with crumbled feta & flat bread	
American waffle stack	8.95
with bacon & maple syrup	

THE BENEDICTS

All served on a English muffin

Classic eggs benedict	10.50
ham, poached eggs & hollandaise	
Eggs Florentine (V)	10.50
warm wilted spinach, poached eggs & hollandaise	
Eggs Royale	11.95
smoked salmon, poached eggs & hollandaise	

HOT DRINKS

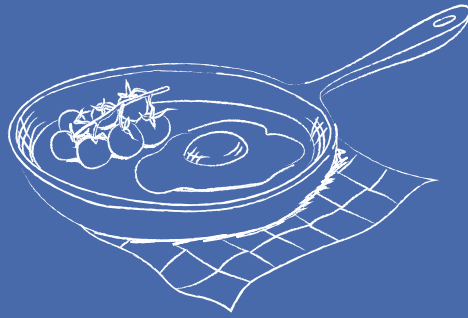
Americano	3.25
Cappuccino	3.65
Double espresso	3.25
Latte	3.65
Flat white	3.65
Macchiato	3.50
Mocha	3.50
Hot chocolate	3.75
Tea	2.95
Specialist tea	2.95
Add syrup +50p <i>Caramel, Vanilla or Hazelnut</i>	
Alternative milks available on request <i>Soya, Oat or Almond</i>	



- (V) Vegetarian (VE) Vegan
(*) Vegan option available

All dishes are prepared in areas where cross contamination may occur. Menu descriptions aren't guaranteed to include all ingredients. Please advise if you have any allergens intolerances before ordering. Scan the QR code for full allergen menu.

A discretionary 12.5% service charge will be added to your bill and fairly distributed amongst the team who prepared or served your meal /drinks.



BREAKFAST

Served 7.30am - 11am Mon - Sat
8am - 11am Sun